

Christmas Carol Costume Designs



Costume Designer & Head Dresser: Katherine Grau

Asst. Dresser: Silvia Caballero

Color Palette and Inspo

(Taken from directors vision slides)



Costume Inspo

- Scrooge- matching the set, maybe 1 red accessory as foreshadowing.
- Townsfolk- colorful but low class Victorian garb. When we transition to the past, the colors can get brighter (ex. Fezziwig, Fan, Belle, etc.).
- Overall sticking with Victorian era design.



Men's Wear circa 1843



The exaggerated hourglass silhouette of 1830s menswear, achieved with padding and closely shaped coats, gave way to a long, narrow line in the 1840s. The male waistline dropped, for a long, fitted look. Sleeves were narrow and no longer gathered into the armhole, which had created a puffed shoulder, but fit smoothly into a sloping shoulder line. Tailcoats were increasingly relegated to evening wear. For more informal occasions, the “newmarket” or riding coat, a relatively new style, could be worn; it was a type of tailcoat that featured a gradual slope to the tails that began above the waist. Trousers were narrowly fitted. This long, smooth line was maintained by a strap that passed under the foot, although the instep strap gradually disappeared through the decade. Usually, trousers did not match the coat but were made in lighter colors or even tweeds and plaids

Women's Wear circa 1843

Female moral virtue was displayed through fashions that while covering more skin than in the past few decades, also took on a rigid, almost Puritanical restraint. Women's clothes became so constricting that her passivity in society was clear. The long, inflexible bodice recalled those of the sixteenth and seventeenth centuries. The silhouette of the 1840s consisted of a long-waisted bodice, tight, narrow sleeves, and a full, dome-shaped skirt that now skimmed the floor. Corsets laced up the back in this period. Bodices of the 1840s featured a V-shape effect that emphasized the long, small waist and sloped shoulders. The dominant sleeve style, by far, was a narrow, tightly-fitted one; these sleeves were usually cut on the bias, resulting in a swirling effect if made with a print. Sleeves were set in below the shoulder. Sleeve caps at the top of the arm, sometimes trimmed with fringe or ribbon, were common sleeve decorations.



Lead Characters

Ebenezer Scrooge

Act one, scene two actor : Kevin Mosquera

- Nightgown- blue-gray, charcoal stripes/plaid pattern
- Dressing Gown- Corduroy, velvet lining
- Nightcap- Match nightgown

Act one, scene one

- Coat- Black
- Top Hat
- + - Pants- Black cotton
- Waistcoat- Black pinstripe
- Under shirt- Cream muslin or linen
- Cravat- Blood red/ burgundy

Dark cool toned colors to symbolize sadness and coldness. Red cravat to foreshadow change and love in the character. 1830s fashion to represent his unchanging personality and loss of the past



Ghost of Christmas Past

Act one, scene three - seven
actor: Teni Afolabi

- White little girl style dress- Ivory, cream, white, silver, iridescent
- White knit scarf and mittens
- White lace and ruffle details on skirt, applique on bodice

Little girl dress to symbolize the past and what used to be. white symbolize youth and purity

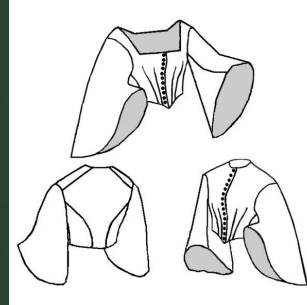


Ghost of Christmas Present

Act one, scene seven - end of act one

Actor : Lorraine Pinion

- Green dress Bodice, bell pagoda sleeves, and overskirt
- Red underskirt
- 1843 style, their 'modern
- + fashion' for present time
- Red piping and trim on bodice and overskirt
- Holly "wreath" in hair
- Red velvet cape/cloak with white fur trim, resemble modern day Santa Clause



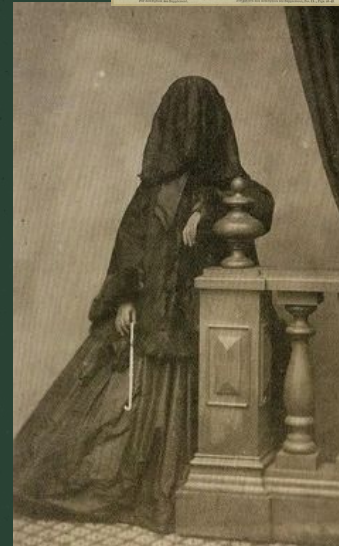
Ghost of Christmas Yet to Come

Act one, scene eight - act two, scene five

Actor : Razmila Bhuiyan

- Black lace details
- Late Victorian era (1880 early edwardian era to represent the future) mourning dress
- Black Veil
- + Gloves
- Narrow silhouette from front, back crinoline "lobster tail bustle"

Mourning dress represent death in a subtle way. Veiled face creates unsettling and ominous presence. Foreshadows death and the future.



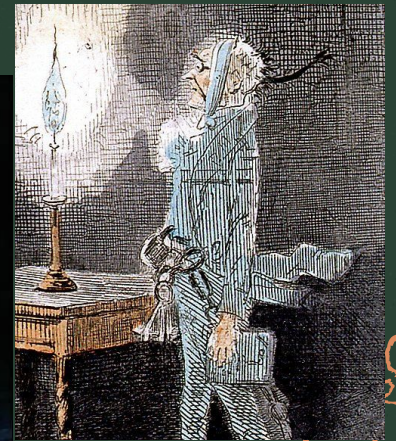
Marely

Act one, scene two Actor : Ian Ruff-Sloan

- Charcoal grey pants
- Black waistcoat; Navy blue, paisley design pattern
- Yellow pocket square in lapel
- Dirty white shirt sleeves
- White lace details on shirt
- Chains around wrists and ankles
- Spiderwebs and dust on shoulders and pants



"Casual" clothes, what he's wearing for all eternity. 1836 fashion, the year he died. Cool dark tones to represent sadness and death. Yellow pocket square on left side represents the betrayal he feels from Scrooge. Yellow represents betrayal in the bible.



Belle

Act one, scene five

Actor : Arohi Kshirsagar

- Cape
- Ear muffs
- Gloves
- Narrow silhouette dress; light pink, peach, cream; lots of ruffles and bows

Symbolize joy and young love. Pink and white details represent her purity and innocence as a young girl in love.



Young Ebenezer Scrooge

Act one, scene five

Actor : Jean Castrillon

- Brown Pants, hasn't descended into his full gloom yet
- Off white shirtsleeves
- Bow tie
- Unbuttoned waistcoat in contrast with old scrooge's uptight and properness
- + - Black top Hat with a pink band around the brim, matching with Belle and representing his love
- White lace handkerchief in lapel, given to him by Belle





Ensemble

Act one, scene three
Actor : Hayle nguyen

Fan

- White Bonnet
- Muff
- A-line Smock Dress; cream / off white linen, light floral patterns
- Shawl

All light colors and floral patterns represent innocence and how Scrooge views her in his memories



Tiny Tim

Act one, Scene eight

Actor : lexi field

- Newsboy cap, plaid
- Ill fitting Brown Pants, plaid or striped or woven
- Dirty off white Undershirt
- Green vest plaid or striped, green represents hope
- Red hand knit scarf, red represents health and life, but also a warning of tragedy
- Worn oversized overcoat with patches covering holes, shows low social status and poverty



BoB Cratchit

Act one, scene one

Actor : Jose Perez

- Long white muffler (scarf)
- Black pants
- Brown coat, not as many patches but still worn
- Top hat, slightly drooped and rumpled
- Fingerless gloves
- Off white undershirt
(Costume should look old and run down)



Fred

Act one, scene seven

Actor : Grant Burkholder

- Formal black coat and pants
- Yellow and blue waistcoat, blue to match his wife Sara, yellow represent joy
- White undershirt
- Blue and yellow plaid cravat
- Top hat



Sara

Act one, scene seven

Actor : Erin Fleming

- Victorian party Dress matches the blue in fred's waistcoat
- Lace details
- Simple details like layers, ruffles, etc
- High lace neck
- Puff sleeves with button clasps at wrists
- A 'proper' victorian woman



School master

Act one, Scene three
Actor : Eiko Amerson

- Black pants
- Long black coat, similar to a judge robe
- Straight lines, very crisp and harsh
- Pointy shoulders
- White tie
- Black undershirt



The misses Fezziwig

Act one, scene four

Actors : Kayliyah Ellis, Raziyah
Pinchinat, Paola Sorto Velasquez

- French influence; lots of lace, patterns, striped, florals
- Same dress, different color variations.
- Large crinoline and cap sleeves
- Bows, ruffles, lace, bows, all in places that look a little odd

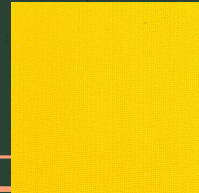
Fezziwig 1: Orange and Green

Fezziwig 2: Green and Yellow

Fezziwig 3: Yellow and Orange



Burnt Orange, Chartreuse Green, Canary Yellow



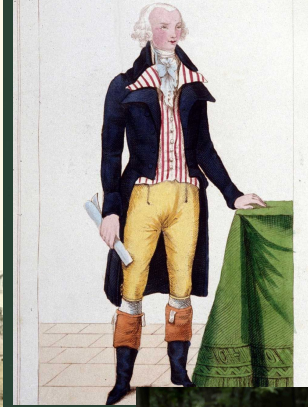
Mr and Mrs Fezziwig

Mr fezziwig

Act one, scene four

Actor: raheem abdullah

- Bright red coat
- White waistcoat with yellow piping and trim
- Off white shirtsleeves
- Yellow dandy pants, white hose underneath
- Off white tie



Mrs fezziwig

Actor : Hannah Agyarko

- Bright red dress, yellow "V" bodice, yellow side layers
- French style, Rococo style
- Straight neckline, Side bustles
- Floral prints, canary yellow, cream



The Gentleman

Act one, scene two

Actors: lyle thomas, and valeria
guanipa

- Black Top hat
- Black or brown Coat
- Waistcoat
- White or offwhite
Undershirt
- Black or dark blue Pants
- Gloves
- tie



The story-tellers

Act one and two, throughout the whole play

Female:

- Different color and style dresses (some v neck and others u neck)
- Scarfs
- Bonnets
- coats/ over coats



Male:

- Pants
- Undershirts
- Waistcoats
- Scarf
- Top hats
- Overcoat



Students

Act one, Scene three
female:

- Different color dresses
- Bonnets
- Scarf
- Gloves
- Coats or swals?
- U neck

male:

- Pants
- Simple shirts
- Coats
- Scarf
- gloves
- Flat cap



Carolers'

Act one, scene two

Actors: haley binford, megan vladick,
elijah watkins, maddie williams

Female:

- Layered dresses (christmas colors)
- Scarfs
- Hats
- gloves

Male:

- Pants
- Undershirts
- Coat
- Gloves
- Top Hat



Female ensemble

Act one and two

- Working victorian dresses
- Some should have a apron
- Slightly puffed sleeves
- Some should have a shawls tie around neck



Male ensemble

Act one and two

- Simple pants
- Off white or brown Undershirt
- Some can have suspenders
- Ties
- Caps
- Coat
- Waistcoat

